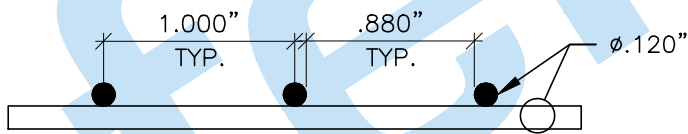


PLAN  
SCALE: FULL SIZE

ISOMETRIC  
SCALE: FULL SIZE



SECTION A  
SCALE: FULL SIZE

WELDMESH

DESCRIPTION: 1x1 MESH x .120" DIA. WIRE  
 CONSTRUCTION: RESISTANCE SPOT WELDED  
 MATERIAL: 304 STAINLESS STEEL, MILD STEEL, CUSTOM  
 MESH COUNT: 1x1 MESH (1"x1" CENTRES/25.4mmx25.4mm CENTRES)  
 WIRE DIA.: .120" (3.05mm)  
 CLEAR OPENING: .880" (22.35mm)  
 % OPEN AREA: 77.4  
 WEIGHT: 93.7 lbs/csf  
 TOLERANCES DEPEND ON MATERIAL AND SOURCE  
 MILL TEST REPORT AVAILABLE ON REQUEST

PRODUCT: 1x1 MESH x .120" DIA. WIRE WELDMESH

Project No. FW-07	Date: JUNE 23, 2016	Drawn By: RR
Drawing No. S7	Rev:	Checked By: MW

**ferrier**

WIRE GOODS COMPANY LTD. • SINCE 1912

170 Mulock Avenue  
Toronto, ON M6N 3C8

Tel: 416-769-5280  
 Fax: 416-769-2232  
 Toll Free: 888-769-5280

info@ferrierwire.com  
 www.ferrierwire.com